

THORNTON COURT

Thornton Hill, EX4 4GR

Tel: 01392 410411
enquiries@leamanslettings.co.uk

thorntoncourtstudentapartments.com



Exceptional student apartments in a secure, gated development near Streatham campus

- **£189.50 Per Person Per Week** – INCLUSIVE OF ALL UTILITIES INCLUDING BROADBAND AND TV LICENCE
- Uncontended Broadband
- All Rooms En-Suite
- All Bedrooms Have Own Intercom Release For Block Door
- Open Plan Living Area
- Set In Gated Grounds with Bike Storage
- Outside Social Space
- 48 Week Tenancy





Spacious, open-plan living

Thornton Court is a modern building, comprising of nine separate student apartments, situated in its own secure gated grounds, within a very close proximity to the University campus (running parallel to Pennsylvania Road). The rent includes all utility bills and the added benefit of a dedicated uncontended Wi-Fi access.

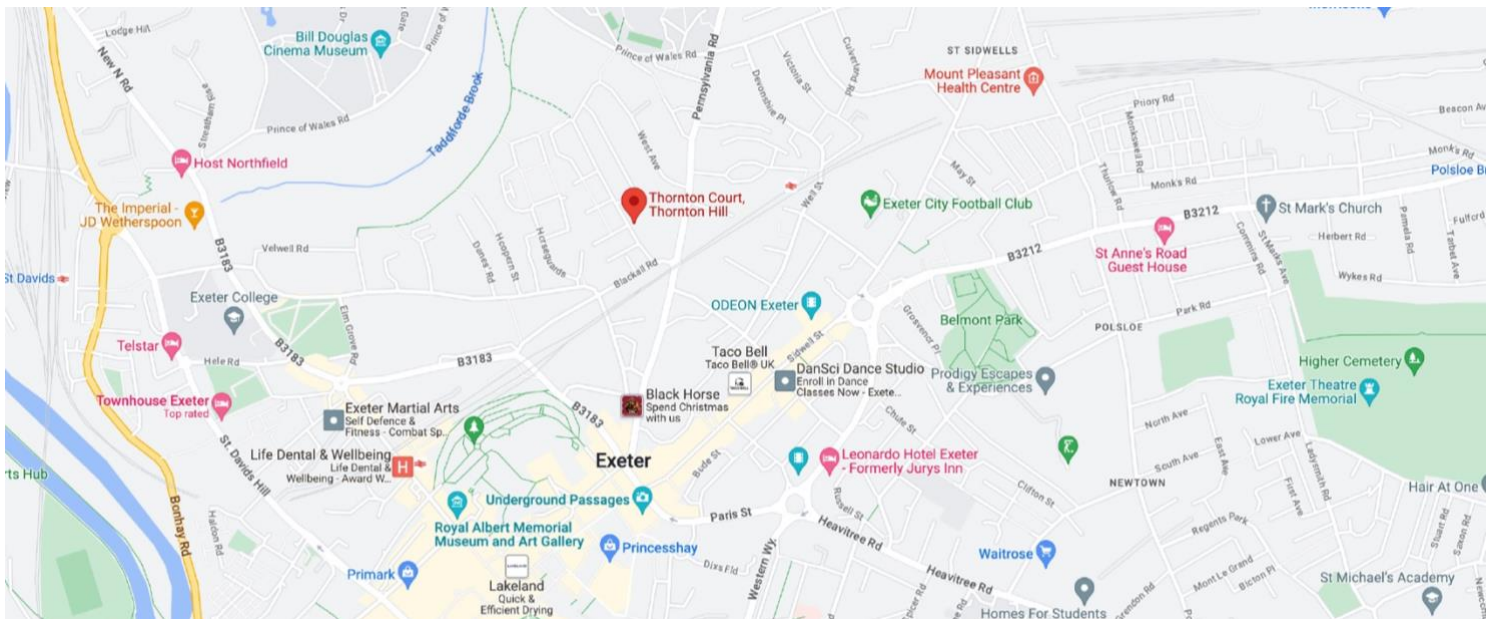
The apartments are spacious, light and airy, with en-suite double bedrooms off the main hall and all bedrooms have their own personal intercom for the main block door. The open plan sitting, dining and kitchen makes for an excellent social space and includes a Smart TV. The kitchen offers an American fridge freezer, dishwasher, washing machine, tumble dryer, hob and oven. This is a student home that needs to be viewed to be appreciated.





Location

The impressive Thornton Court development is enviably located in a highly regarded residential street of similar quality properties. The University of Exeter's main Streatham Campus is just a brief walk away and the position is arguably as good as it gets. Facilities in the immediate area include two well stocked mini markets, the Devon & Exeter Squash & Racketball Club and a popular 'student' pub. Exeter City centre and all it has to offer is also within easy walking distance.



£189.50

Per person per week

Inclusive All Utilities

Uncontended Broadband

All Rooms En-suite

Gated Grounds

ENQUIRE ONLINE:

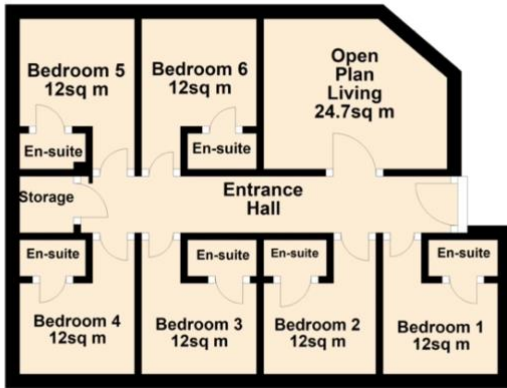


Floorplans

Flat 1

Ground Floor

Approx. 27.6 sq. metres (296.9 sq. feet)

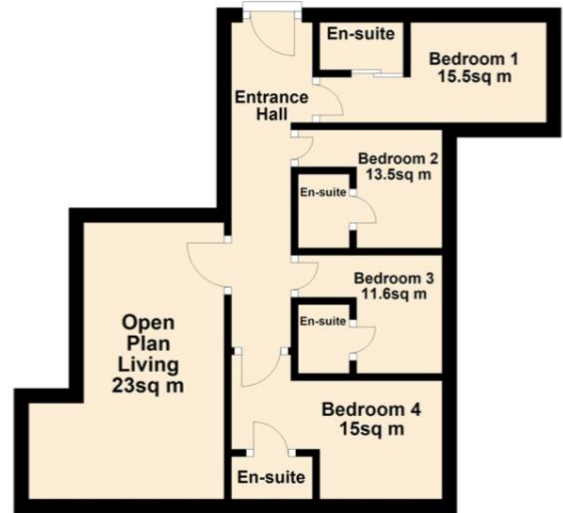


Total area: approx. 27.6 sq. metres (296.9 sq. feet)

Flat 2

Ground Floor

Approx. 28.8 sq. metres (310.0 sq. feet)

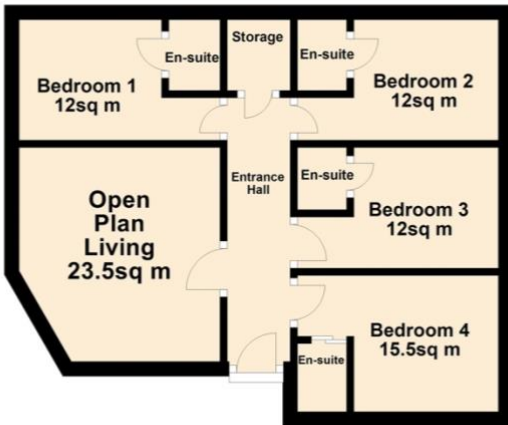


Total area: approx. 28.8 sq. metres (310.0 sq. feet)

Flat 3

Ground Floor

Approx. 31.4 sq. metres (338.2 sq. feet)

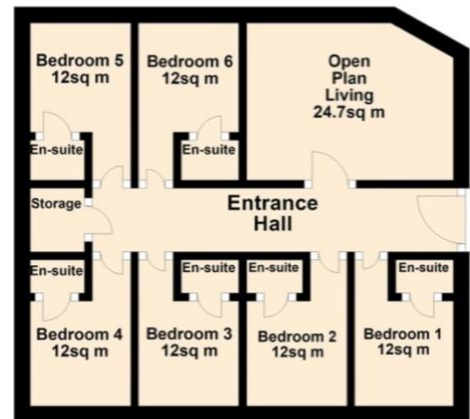


Total area: approx. 31.4 sq. metres (338.2 sq. feet)

Flat 4

First Floor

Approx. 0.0 sq. metres (0.0 sq. feet)

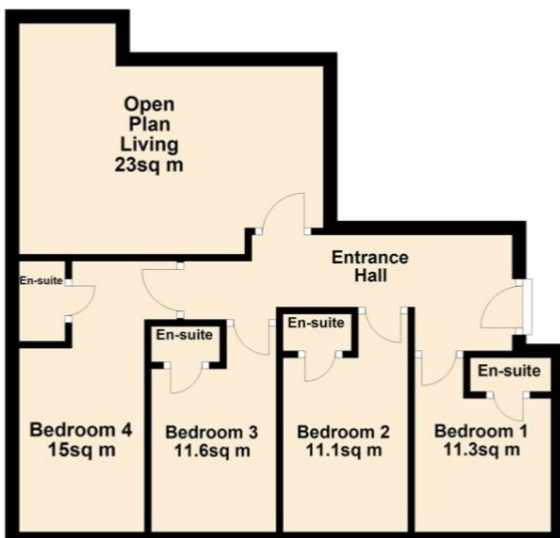


Total area: approx. 0.0 sq. metres (0.0 sq. feet)

Flat 5

First Floor

Approx. 42.9 sq. metres (461.3 sq. feet)



Total area: approx. 42.9 sq. metres (461.3 sq. feet)

Flat 6

First Floor

Approx. 0.0 sq. metres (0.0 sq. feet)

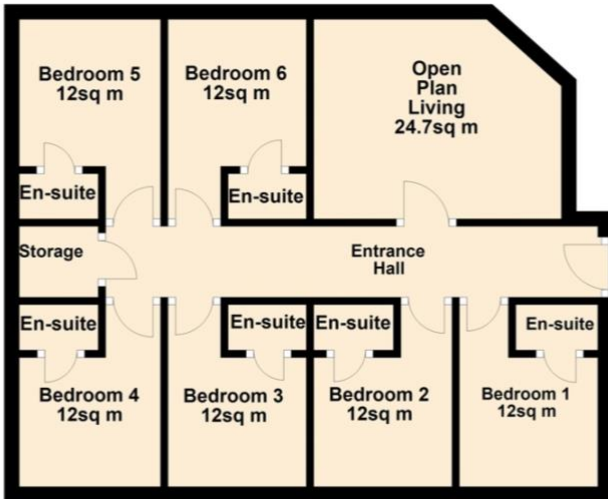


Total area: approx. 0.0 sq. metres (0.0 sq. feet)

Flat 7

Second Floor

Approx. 46.0 sq. metres (495.3 sq. feet)

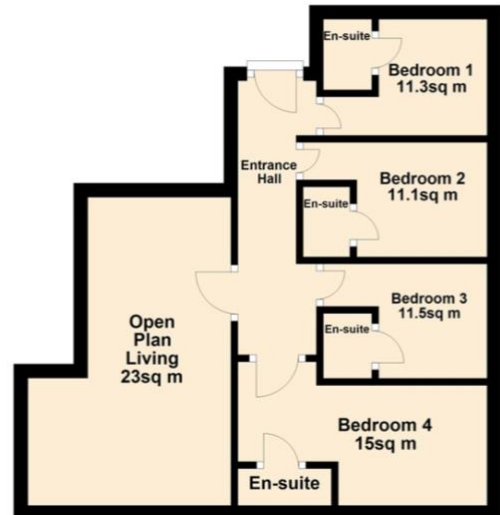


Total area: approx. 46.0 sq. metres (495.3 sq. feet)

Flat 8

Second Floor

Approx. 34.3 sq. metres (369.3 sq. feet)



Total area: approx. 34.3 sq. metres (369.3 sq. feet)

Flat 9

Second Floor

Approx. 27.9 sq. metres (300.5 sq. feet)



Total area: approx. 27.9 sq. metres (300.5 sq. feet)

ENQUIRE ONLINE:



THORNTON COURT

Thornton Hill, EX4 4GR

Tel: 01392 410411
enquiries@leamanslettings.co.uk

thorntoncourtstudentapartments.com